



# MÖVENPICK

MS ROYAL LOTUS  
NILE CRUISE

# ROYAL LOTUS

Movenpick MS Royal Lotus is a luxurious Nile River cruise ship, offering a serene and elegant journey through Egypt's vibrant landscapes. Modern elegance, the ship creates a romantic atmosphere with its beautifully crafted interiors featuring vibrant colors and sophisticated furnishings. Guests can relax in one of the 60 stylish cabins or 2 opulent Royal Suites, each equipped with modern amenities to ensure maximum comfort and an intimate experience.

Onboard, guests can enjoy breathtaking views of the Nile's timeless beauty, creating a serene and elegant atmosphere throughout the journey. The cruise offers expertly guided excursions to explore Egypt's rich history, seamlessly blending cultural discovery with moments of relaxation and tranquility.

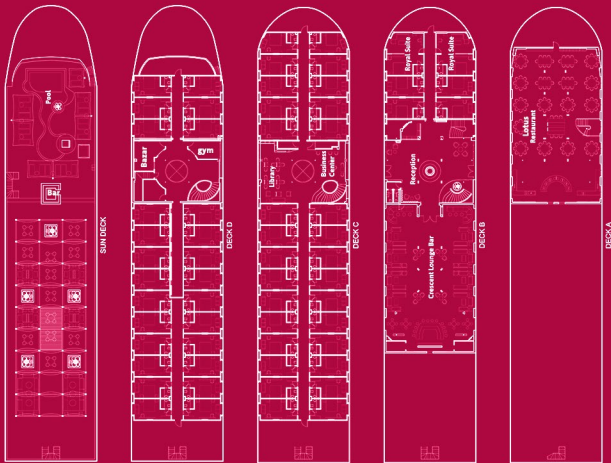
✓ 4 Nights / 5 Days Cruise Every Monday From Luxor to Aswan.

✓ 3 Nights / 4 Days Cruise Every Friday From Aswan to Luxor.





# ROYAL Lotus FEATURES



- ✓ Total Space: 5,180 m<sup>2</sup>
- ✓ Launch Year: 2006
- ✓ Number of Guests: 135
- ✓ Passenger to Crew: 1.8:1
- ✓ Number of Cabins: 60
- ✓ Number of Suites: 2
- ✓ Number of Crew: 75
- ✓ Passenger to Space: 1:38
- ✓ Full Renovation Year: 2022



# LOTUS RESTAURANT

It provides three gourmet meals daily as part of the full-board accommodation. Guests can enjoy a variety of buffet options, with each day showcasing a different cuisine, offering a diverse and flavorful dining experience. For a more tailored option, the a la carte menu features a selection of carefully crafted dishes.

The restaurant also hosts themed dinners, offering a unique dining atmosphere inspired by specific cuisines or occasions. These events add variety and a memorable element to the dining schedule.

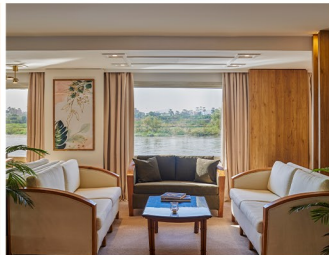
For guests with specific dietary requirements, the restaurant accommodates individual needs by preparing specially tailored meals, ensuring all guests have a comfortable and enjoyable dining experience.



## ABSTRACT LOUNGE BAR

Located on the main deck, is a spacious and elegantly designed venue featuring natural tones, a well equipped bar, a dance floor, and panoramic windows that offer stunning views. This versatile space provides a comfortable setting for relaxation and social gatherings. The lounge hosts a variety of events, including a welcome cocktail reception, a traditional galabeya party, and themed evenings, ensuring engaging and memorable experiences for all guests.

Adding to its charm, the lounge offers a delightful chocolate hour with an array of sweet treats, complemented by evening entertainment such as captivating belly dancer performances, bringing a cultural and dynamic touch to the atmosphere.



## LIBRARY & BUSINESS CENTER

Situated on the second deck, the Pharaonic Lobby provides a tranquil setting for guests to unwind with coffee or tea while admiring the scenic views. The space includes a card table for games, a fully equipped Business Center, and a library featuring a wide range of books on culture and history, offering opportunities for both relaxation and intellectual enrichment.



## SUN DECK & BAR

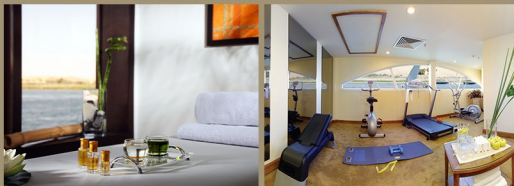
It's thoughtfully divided into three stylishly furnished areas, offering a variety of spaces for relaxation and leisure. One section features tables and chairs shaded by a canopy, providing a cool and comfortable spot. Another area surrounds the plunge pool with restful Sunbeds, perfect for sunbathing and unwinding. The third section showcases Bedouin-style low seating, complete with oversized cushions on a traditional wooden frame, creating a cozy and inviting ambiance.

Adding to the deck's appeal, the Sun Deck Bar serves refreshing cocktails and light snacks throughout the day. Guests can also enjoy a serene afternoon tea time, making it an ideal place to relax while taking in the stunning views.



## GYM & SPA

The Cruiser features an equipped fitness area located on the third deck, allowing guests to maintain their fitness routine while enjoying views of the Nile. Additionally, the ship includes a massage room where guests can unwind and relax after a day of activities.



## ROOM TYPES

### Deluxe Cabin

The Cabin is elegantly designed with natural hues, creating a warm and inviting ambiance. Panoramic windows further enhance the experience by offering uninterrupted views of the stunning and constantly changing scenery.

- Size: 22sqm / 236.8sqf.
- Max occupancy: 3.
- Bedding: King bed or two single beds.

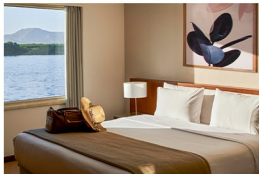
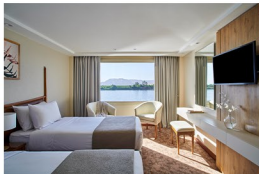
Amenities: Satellite TV/ Mini-bar/ Toiletries/ Bathtub/ Wi-Fi/ Laundry service/ Slippers & Robes/ Tea/ Coffee/ Hairdryer /Room service/ Electronic Safe.

### Royal Suite

For the pinnacle of luxury on your Nile cruise, our Royal Suites offer an inviting living area in addition to your cabin. Featuring a spacious closet in the en-suite bathroom, the Royal Suite provides the perfect sanctuary to relax after a day of captivating onshore excursions.

- Size: 42sqm / 452sqf.
- Max occupancy: 3.
- Bedding: King bed.

Amenities: Satellite TV/ Mini-bar/ Toiletries/ Bathtub/ Wi-Fi/ Laundry service/ Slippers & Robes/ Tea/Coffee/ Hairdryer /Room service/ Electronic Safe.





# ROYAL LOTUS ITINERARY



#### DAY 4 – MONDAY

Early check out ( 8:00 am )  
Breakfast on board followed by Visit  
Karnak temple and west bank ( Valley of  
the Kings & Temple of Queen Hatshepsut )

## 3 NIGHTS / 4 DAYS CRUISE FROM ASWAN TO LUXOR EVERY FRIDAY



#### DAY 2 – SATURDAY

06:30 Breakfast on board.  
08:00 Visit the High Dam,  
the Temple of Philae  
13:00 Sailing to Kom Ombo.  
13:00 Lunch on board.  
15:30 (upon arrival ) Visit  
Kom Ombo temple  
17:00 Sailing to Edfu  
17:00 Afternoon Tea during  
sail to Edfu  
20:00 Dinner on board.  
21:30 Galabia Party.  
Overnight in Edfu .



#### DAY 3 – SUNDAY

05:15 Visit Edfu temple  
07:30 Sailing to Luxor via Esna  
07:30 Breakfast on board.  
13:00 Lunch on board.  
15:30 Tea and coffee served with  
homemade chocolate  
16:00 (upon arrival ) Visit East  
Bank (Luxor temple).  
20:00 Dinner on board.  
21:30 Belly Dance Show.  
Overnight in Luxor.



#### DAY 1 – FRIDAY

12:00 noon Check in.  
12:30 Lunch on board.  
14:30 Felucca ride (Nubian village)  
( optional tour )  
19:30 Welcome Reception Cocktail.  
20:00 Dinner on board.  
Overnight in Aswan.



## 4 NIGHTS / 5 DAYS CRUISE FROM LUXOR TO ASWAN EVERY MONDAY



4 NIGHTS / 5 DAYS CRUISE FROM  
LUXOR TO ASWAN EVERY MONDAY

### DAY 1 – MONDAY

12:00 Check-in.  
12:30 Lunch on board.  
14:30 Excursion to  
the Temples of Luxor & Karnak  
19:30 Dinner on board.  
21:00 Belly dancer show  
Overnight in Luxor.

### DAY 2 – TUESDAY

06:00 Breakfast on board.  
07:00 Excursion to the Valley  
of the Kings & Temple of Hatshepsut  
13:00 Sail to Edfu via Esna.  
13:00 Lunch on board.  
16:30 Afternoon tea.  
19:00 Welcome Reception Cocktail.  
19:30 Dinner on board.  
Overnight in Edfu.



### DAY 3 – WEDNESDAY

05:00 Tea and coffee at the bar.  
06:00 Excursion to Edfu Temple.  
08:00 Sailing to Kom Ombo.  
08:00 Breakfast at the restaurant  
12:30 Lunch on board.  
14:00 Excursion to the  
Temple of Kom Ombo  
15:30 Sailing to Aswan  
15:30 Afternoon tea  
19:00 Dinner on board.  
20:30 "Galabia Party"  
Over night Aswan.

### DAY 4 – THURSDAY

07:00 Breakfast on board.  
08:00 Visit the High Dam,  
the Temple of Philae.  
13:00 Lunch on board.  
15:00 Felucca on the Nile to  
Botanical garden.  
17:30 Chocolate Hour & Fruit  
of the month  
19:30 Dinner on board.  
Overnight in Aswan.



### DAY 5 – FRIDAY

07:00 Breakfast on board.  
08:00 Check-out after breakfast.

MÖVENPICK  
NILE CRUISERS EGYPT